



Mount-Maketu/Maketu-Mount/Mount-Mount



Venue: Pilot Bay or Maketu

Distance: 32km Iron

Type: W6

Divisions: Open Men, Open Women, Open Mixed

Cost: \$360 per team

Event Schedule: Saturday 21st March 2026

8:00am Registration – at the announced start line. All teams must attend

9:00am Race briefing – 1 person per team must attend

11:00am Race Start Women/Mixed

11:15am Race Start Men

2:30pm Lolo Authentic Turkish Kitchen – 97b Maunganui Road, Mount Maunganui

3:30pm Prizegiving @ the finish line

How to enter:

Your club Rep can enter all waka ama entries online.

You must be of age to race open ocean and have the same names you register for that race on the day.

Once entry is in please make Payment to:

Moore-morial event

06-0266-0143738-00

Please use your team name, club as reference.

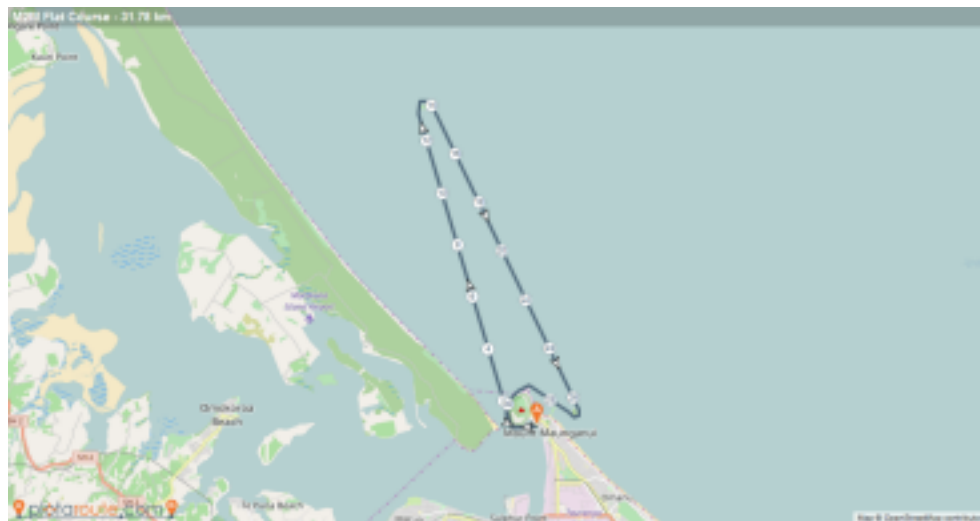
Once you have entered. Please get your team captain to email so they can be directly informed with weather and start line updates.

ikekumuconnections@gmail.com

Race Course: Mount 2 Maketu



Back up Race Course: 32km



High Tide:

Low Tide:

Compulsory Equipment:

The following equipment must be carried by all waka and will be checked at gear check

- 1 life jacket per paddler (must fit correctly)
- 2 bailers W6,
- 2 Spare paddle W6
- 25m Tow rope W6 attached ready for towing

- Spray skirt
- Cell phone in waterproof bag or VHF Radio on Channel 62
- Bilge pumps can be used for your safety

Race Course:

The race course will be decided on Friday March 20th and all teams will be contacted. If the race start is notified for Maketu, then race registration and briefing will also be from Maketu. We do not provide lead boats. You are responsible for knowing the race course.

Penalties:

There are time penalties for teams paddling before the race start and not completing the correct course. **1 hour per penalty.**

Entrants:

The race is limited to 20 entries. First in first served; and teams with no proven history will need to provide sufficient results to prove their capability. ikekumuconnections@gmail.com

Bad weather:

In the case of bad weather making it too dangerous to paddle on the open ocean during the set race day and back up day, then the race will be moved to the shelter of the harbour from Pilot bay.

